

We regularly carry top plates with other than standard bolt hole centers: As shown in the chart, these will interchange with standard top plates. There are other optional top plates and/or bolt hole centers available.

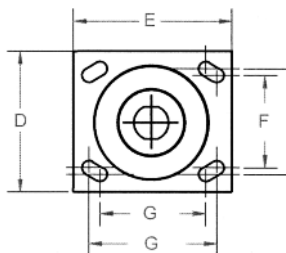
To order: Use standard caster number with option number of "ST-series#" for swivel or "RT-series#" for rigid followed by the alpha bolt hole center designation.

Example: 16TM06201S ST16J

(swivel top, 16 series, bolt hole center "A")

272PD06201R RT272D

(Rigid top, dual wheel 72 series, bolt hole center "F")



Top Plate & Bolt Hole Centers Chart

F & G Bolt Hole Centers (inches)	D & E Top Plate Size (inches)	Attaching Bolt Size (inches)	Special Bolt Hole Template Design									
			12, 16, 50	71, 53	72, 54	81	90	94	95	100	400	
Slotted for 3 x 4 or 2-5/8 x 3-5/8	4 x 5	3/8	J	J								
Slotted for 3-3/8 x 5-1/4 or 2-7/16 x 4-15/16	4-1/2 x 6-1/4	1/2	K								K	
Not slotted 2-1/8 x 4	4 x 5	3/8		G								
3 x 3	4 x 4	3/8		H								
3-1/4 x 6	4-1/2 x 7-1/4	1/2			W	W						
3-1/4 x 6	5-1/2 x 7-1/4	1/2					W					
4-1/8 x 4-1/2	5 x 5-1/2	3/8	D		D	D						
4-7/8 x 6-3/4	Swivel 6-1/2 x 8 Rigid 6 x 8	5/8							C			
7 x 9-3/4	Swivel 8-1/2 x 11 Rigid 9 x 11	5/8								T		
Slotted for 4-5/8 x 5-1/2 or 4-3/8 x 5-5/8	6 x 7	1/2										N

Overall Heights Chart

The table below shows variations in overall height special overall heights can be obtained y using smaller diameter wheels in larger rigs. For example, by using 6" wheels in 8" rigs, the height is 1/2" the difference in wheel diameter, or 1" lower than the regular height with an 8" wheel.

Series	Wheel Diameter (inches)	Optional Height (inches)	Swivel Lead (inches)	Option Number
12, 16, 33	3-1/4	5-1/4	1-11/16	HS-42
12, 16, 33	4	5-1/4	1-11/16	HS-86
12, 16, 33	5	6-1/8	1-11/16	HS-50
12, 16, 33	5	6-3/4	1-3/4	HS-54
12, 16, 33	6	6-7/8	2-1/4	HS-56
12	6	7-1/4	1-3/4	HS-82
16	6	7-3/8	1-3/4	HS-59
16	6	7-1/2	1-3/4	HS-60
2	6	7-3/4	1-3/4	HS-85
12, 16	8	10	1-3/4	HS-81
34, 62	8	9-1/2	2-1/4	HS-76
34, 62	8	9-3/4	1-3/4	HS-83
63	8	9-1/2	2-1/4	HS-84
100	8	9-1/2	2-1/2	HS-89

Replacement Part Chart

The table immediately below gives part numbers of caster axles, spanner bushings, straight roller bearings and washers for most standard casters listed in this catalog. Please consult Acorn for tapered roller bearing wheels or casters not listed.

Caster Series Number & Description	Replacement Part Numbers							
	Wheel Hub Length (inches)	Axle and Nut	Spanner Bushing	Thrust Washer	Roller Bearing	Plain Retaining Washer	Sealed Retaining Washer	Ball Bearing
02- Roller Bearing	1-3/8	ZJ063508	ZF060824	WA082400	ZB081718	WA081790	WA081790	
02-Oilex & Plain Bearing	1-3/8	ZJ063508	ZF060824	WA082400				
02-Ball Bearing	1-5/8	ZJ063509					WA121905	
09, 12, 16	1-5/8	ZJ085408	ZF081239	WA121905	ZB121920	WA121905	WA121905	ZA081900
	2-3/16	ZJ085408	ZF081239	WA121905	ZB121930	WA121905	WA121905	ZA081902
31, 33	1-5/8	ZJ085408	ZF081230	WA121905	ZB121920	WA121905	WA121905	
34	2-3/16	ZJ086408	ZF081239	WA121905	ZB121930	WA121905	WA121905	
50	1-5/8	ZJ086408	ZF081230	WA122600	ZB121920		WA121990	
51, 53, 54	2-3/16	ZJ086408	ZF081239	WA122600	ZB121930		WA121990	
61, 62, 71, 72	1-27/32	ZJ085408	ZF081239	WA121905	ZB121930	WA121905	WA121905	ZA081902
61, 62, 72		ZJ086408	ZF081248	WA122600	ZB121940	WA121990	WA121990	
63	2-13/32	ZJ126808	ZF121648	WA163900	ZB163140	WA163190	WA163190	
78	2-3/16	ZJ085808	ZF081239	WA121905	ZB121930	WA121905	WA121905	
	2-3/4	ZJ086809	ZF081248	WA122600	ZB121940	WA121990	WA121990	
81, 84	2-3/4	ZJ127608	ZF121657	WA163900	ZB163148	WA163103	WA163190	
90, 92	3-1/4	ZJ127608	ZF121657	WA163900	ZB163148	WA163103	WA163190	
	4-1/4	ZJ169609	ZF162073	WA204800	ZB203694	WA203903	WA203990	
100	2-3/16	ZJ085408	ZF081239	WA121905	ZX121930	WA121905	WA121905	ZA081902

Spanner Bushings & Thrust Washers

All spanner bushings are hardened to form precision inner race for roller bearings. Except as noted below by the asterisk (*), all spanner bushings are cross drilled for lubrication through hollow axle. Thrust washers are hardened. They are not part of the spanner bushing assembly and must be ordered separately.

Part Number	Spanner Bushing			Thrust Washers	
	ID (inches)	OD (inches)	Length (inches)	Number	Size (inches)
ZF060824	3/8	1/2	1-5/8	WA082400	1/2 x 1-1/2
ZF081030	1/2	5/8	1-7/8	WA102400	5/8 x 1-5/8
ZF081033	1/2	5/8	2-3/64	WA102400	5/8 x 1-5/8
ZF081036	1/2	5/8	2-1/4	WA102400	5/8 x 1-5/8
ZF081038	1/2	5/8	2-3/8	WA102400	5/8 x 1-5/8
ZF081039	1/2	5/8	2-7/16	WA102400	5/8 x 1-5/8
ZF081046	1/2	5/8	2-7/8	WA102400	5/8 x 1-5/8
ZF081230	1/2	3/4	1-7/8	WA122600	3/4 x 1-5/8
ZF081236	1/2	3/4	2-1/4	WA122600	3/4 x 1-5/8
ZF081238	1/2	3/4	2-3/8	WA122600	3/4 x 1-5/8
ZF081239	1/2	3/4	2-7/16	WA122600	3/4 x 1-5/8
ZF081248	1/2	3/4	3	WA122600	3/4 x 1-5/8

Part Number	Spanner Bushing			Thrust Washers	
	ID (inches)	OD (inches)	Length (inches)	Number	Size (inches)
ZF081264*	1/2	3/4	4	WA122600	3/4 x 1-5/8
ZF101239	5/8	3/4	2-7/16	WA122600	3/4 x 1-5/8
ZF121648	3/4	1	3	WA163900	1 x 2-7/16
ZF121657	3/4	1	3-1/2	WA163900	1 x 2-7/16
ZF121664*	3/4	1	4	WA163900	1 x 2-7/16
ZF121667*	3/4	1	4-13/16	WA163900	1 x 2-7/16
ZF162057*	1	1-1/4	3-9/16	WA203903	1-1/4 x 2-7/16
ZF162073*	1	1-1/4	4-9/16	WA204800	1-1/4 x 3
ZF16208*	1	1-1/4	5-9/16	WA204800	1-1/4 x 3
ZF202458*	1-1/4	1-1/2	3-9/16	WA245600	1-1/2 x 3-1/2
ZF202473*	1-1/4	1-1/2	4-9/16	WA245600	1-1/2 x 3-1/2
ZF202489*	1-1/4	1-1/2	5-9/16	WA245600	1-1/2 x 3-1/2

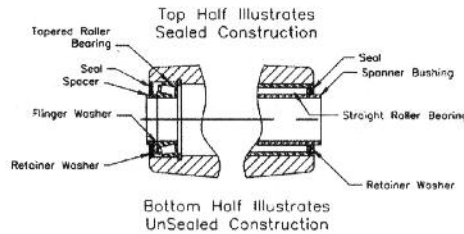
Straight roller Bearing & Retaining Washers

Straight roller bearings include roller assembly with split outer race but does not include the retaining washers. Retaining washers are ordered separately in quantities of 2 per wheel.

Part Number	Roller Bearing Size			Retaining Washer Numbers		Size (inches)
	ID (inches)	OD (inches)	Length (inches)	Plain	Sealed	
ZB081718	1/2	1-1/16	1-1/8	WA081703	WA081790	1/2 X 1-1/16
ZB163140	1	1-15/16	2-1/2	WA163103	WA163190	1 x 1-15/16
ZB163148	1	1-15/16	3	WA163103	WA163190	1 x 1-15/16
ZB163164	1	1-15/16	4	WA163103	WA163190	1 x 1-15/16
ZB183148	1	1-15/16	3	WA203103		1-1/4 x 1-15/16
ZB203140	1-1/8	1-15/16	2-1/2	WA203103	WA203190	1-1/4 x 1-15/16
ZB203148	1-1/4	1-15/16	3	WA203103	WA203190	1-1/4 x 1-15/16
ZB081922	1/2	1-3/16	1-3/8	WA121900		3/4 X 1-3/16
ZB081932	1/2	1-3/16	2	WA121900		3/4 X 1-3/16
ZB101922	5/8	1-3/16	1-3/8	WA121900	WA101990	3/4 X 1-3/16
ZB101932	5/8	1-3/16	2	WA121900	WA101990	5/8 x 1-3/16
ZB101940	5/8	1-3/16	2-1/2	WA121900	WA101990	5/8 x 1-3/16
ZB121920	3/4	1-3/16	1-1/4	WA121900	WA121905	3/4 X 1-3/16
ZB121930	3/4	1-3/16	1-7/8	WA121900	WA121905	3/4 X 1-3/16
ZB121940	3/4	1-3/16	2-1/2	WA121900	WA121990	3/4 X 1-3/16
ZB142332	7/8	1-7/16	2	WA162303	WA142390	7/8 x 1-7/16
ZB162328	7/8	1-7/16	1-3/4	WA162303	WA162390	1 x 1-7/16
ZB244580	1-1/2	2-13/16	5	WA244503		1-1/2 x 2-13/16
ZB203948	1-1/4	2-7/16	3	WA203903	WA203990	1-1/4 x 2-7/16
ZB203964	1-1/4	2-7/16	4	WA203903	WA203990	1-1/4 x 2-7/16
ZB203980	1-1/4	2-7/16	5	WA203903	WA203990	1-1/4 x 2-7/16
ZB243948	1-1/4	2-7/16	3	WA243903	WA243990	1-1/2 x 2-7/16
ZB243964	1-1/2	2-7/16	4	WA243903	WA243990	1-1/2 x 2-7/16
ZB243980	1-1/2	2-7/16	5	WA243903	WA243990	1-1/2 x 2-7/16
ZB284948	1-3/4	3-1/16	3	WA284903		1-3/4 x 3-1/16
ZB284964	1-3/4	3-1/16	4	WA284903		1-3/4 x 3-1/16
ZB284980	1-3/4	3-1/16	5	WA284903		1-3/4 x 3-1/16
ZB325248	2	3-1/4	3	WA325203		2 x 3-1/4
ZB325264	2	3-1/4	4	WA325203		2 x 3-1/4
ZB325280	2	3-1/4	5	WA325203		2 x 3-1/4
ZB325296	2	3-1/4	6	WA325203		2 x 3-1/4

* Washer is made of Nylon

Line drawing (right) section view shows typical wheel hub construction with sealed straight and tapered roller bearings. Note spacer tubes are used with tapered roller bearings which increases hub length 1/4" and facilitates proper loading of cup to cone. For non-sealed construction, seal is replaced with retainer and flinger washers.



Oilex

Part Number	ID (inches)	OD (inches)	Length (inches)
ZO081722	1/2	1-1/16	1-3/8
ZO081926	1/2	1-3/16	1-5/8
ZO081935	1/2	1-3/16	2-3/16
ZO101926	5/8	1-3/16	1-5/8
ZO101935	5/8	1-3/16	2-3/16
ZO121926	3/4	1-3/16	1-5/8
ZO121935	3/4	1-3/16	2-3/16

Ball Bearings

Part Number	ID (inches)	OD (inches)
ZAO1900	1/2	1-3/16
ZAO81902	1/2	1-3/16

Axles

Hollow axles have zerkl fitting for lubrication and solid axles are without lubrication fitting. All axles come complete with lock nut.

Axle Number	Type	Diameter & Length (inches)
ZJ063508	Hollow	3/8 x 2-3/16
ZJ063509	Solid	3/8 x 2-3/16
ZJ084508	Hollow	1/2 x 2-13/16
ZJ084509	Solid	1/2 x 2-13/16
ZJ085408	Hollow	1/2 x 3-3/8
ZJ085409	Solid	1/2 x 3-3/8
ZJ085808	Hollow	1/2 x 3-3/8
ZJ086408	Hollow	1/2 x 4
ZJ087209	Solid	1/2 x 4-1/2
ZJ105608	Hollow	5/8 x 3-1/2
ZJ126808	Hollow	3/4 x 4-1/4
ZJ127608	Hollow	3/4 x 4-3/4
ZJ127608	Solid	3/4 x 4-3/4
ZJ168009	Solid	1 x 5
ZJ169609	Solid	1 x 6
ZJ169608	Hollow	1 x 6
ZJ063510	Solid Stainless	3/8 x 2-3/16
ZJ085608	Hollow Stainless	1/2 x 3-1/2
ZJ085609	Solid Stainless	1/2 x 3-1/2

Consult Acorn for optional slotted nuts and lock pins.

